



## ISIS IMAGERY BRIEF

**September 25, 2009**

ISIS has obtained satellite imagery from DigitalGlobe of two possible locations of the gas centrifuge uranium enrichment facility under construction near Qom, Iran. Both are tunnel facilities located within military compounds approximately 30-40 kilometers away from Qom (see images below).

[Facility #1](#)

[Located North East of Qom](#)

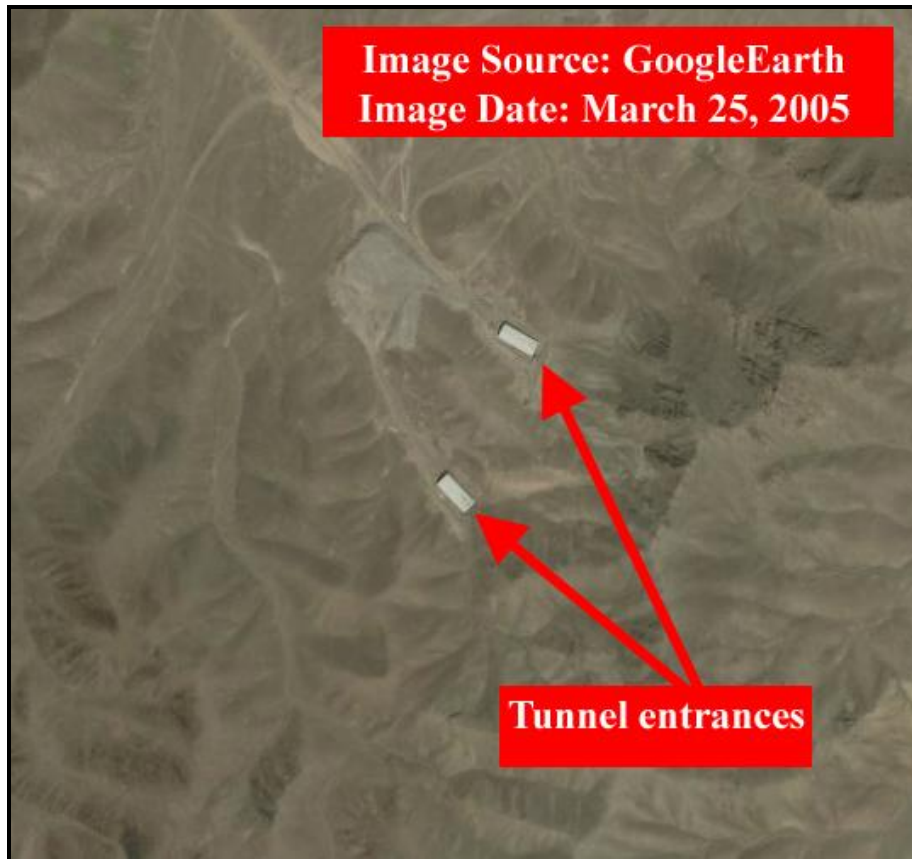
[Coordinates: 34.88459, 50.99596](#)

[Facility #2](#)

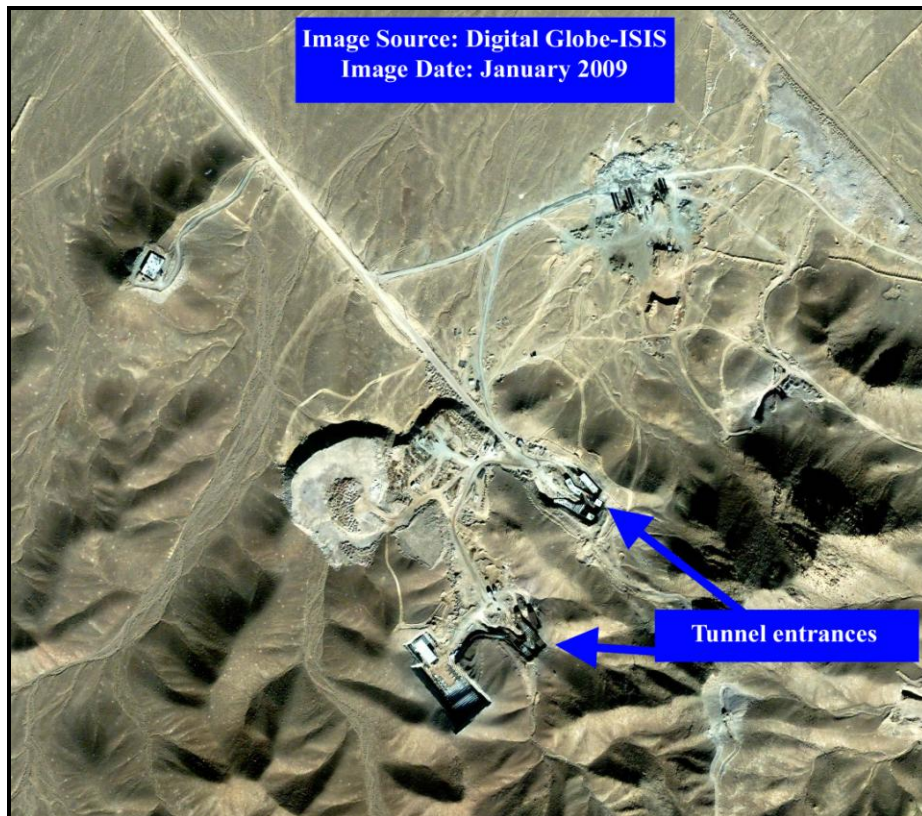
[Located North West of Qom.](#)

[Coordinates: 34.94373, 50.76056](#)

**Facility #1**

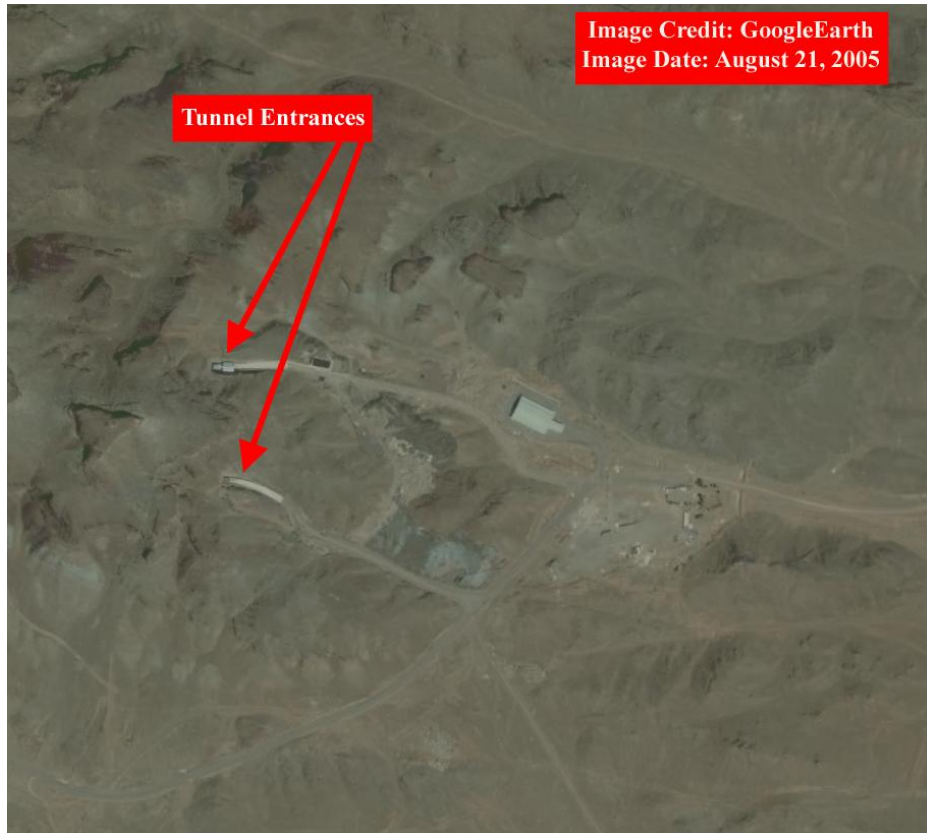


Tunnel entrances inside military facility, north-east of Qom



Tunnel entrances inside military facility, north-east of Qom.

## Facility #2



Tunnel entrance inside military facility, north-west of Qom



Tunnel entrances inside military facility, north-west of Qom